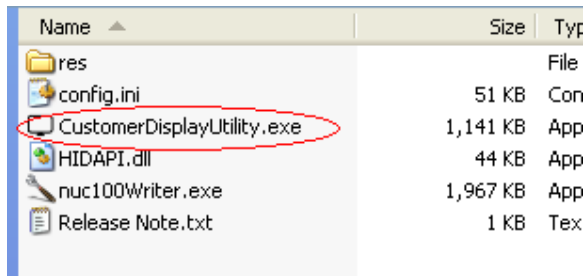


Customer Display Configuration Utility

User Manual

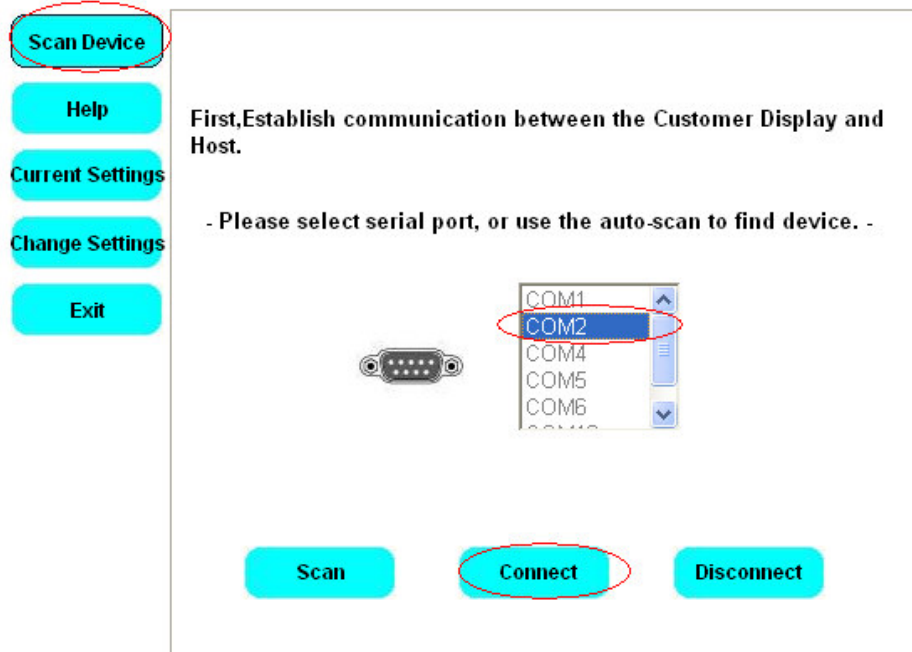
1. Click "CustomerDisplayUtility.exe" to start utility.



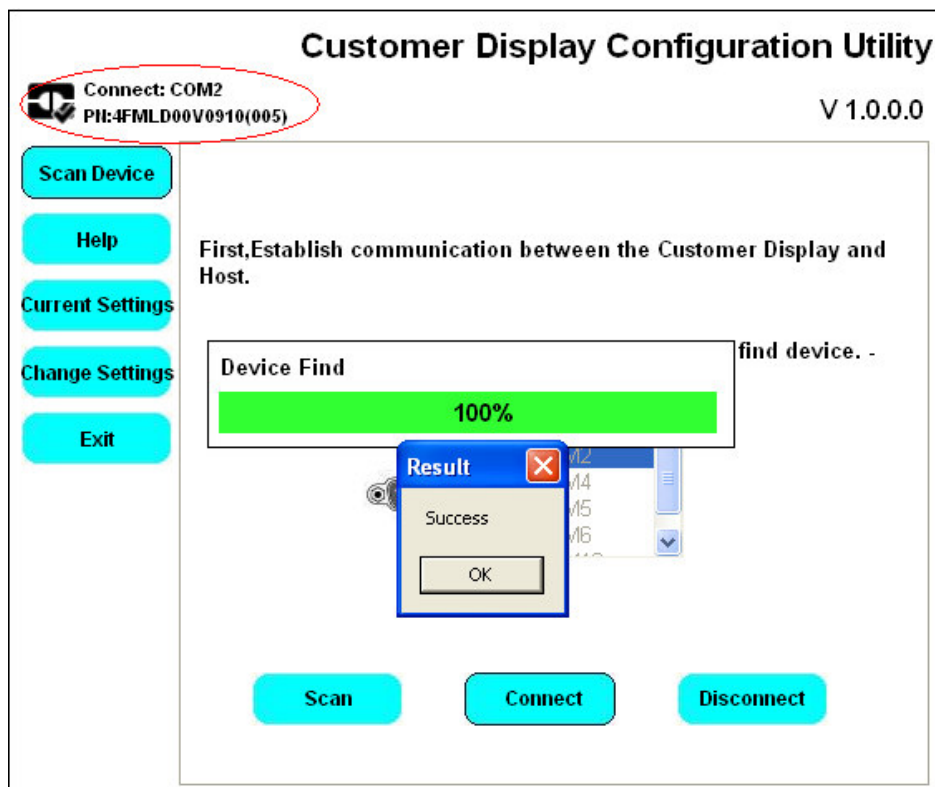
2. Select device serial port then click "Connect" to link device, or you can use "Scan" to auto scan all serial port.

Customer Display Configuration Utility

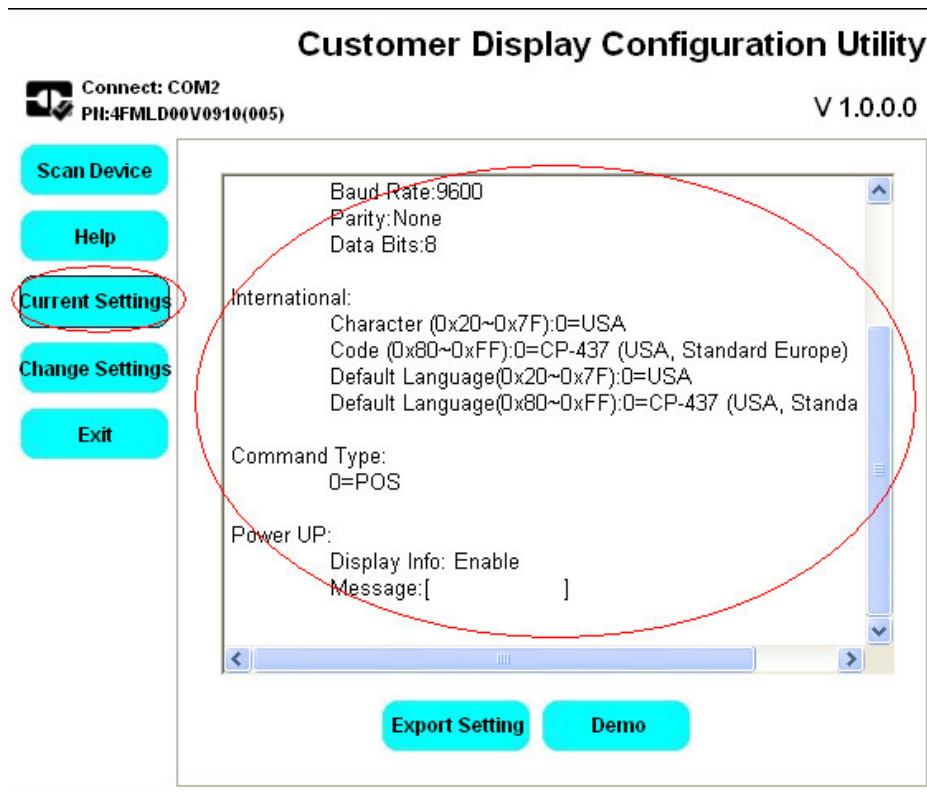
V 1.0.0.0



3. If found device show device firmware version.



4. Click "Current Settings" to check device settings.



5. Click “Change Settings” to change device setting value.

Customer Display Configuration Utility

Connect: COM2
PIN:4FMLD00V0910(005) V 1.0.0.0

Scan Device Help Current Settings **Change Settings** Exit

Configuration Firmware Update

Connection
Baud Rate: 9600
Parity: None
Data Bits: 8

Power UP
☐ Display Info And Message
Message :

International
Character (0x20~0x7F): 0=USA
Default (0x20~0x7F): 0=USA

Command Type
Command Type: 0=POS

Set to Device Get From Device Export To File Import From File

6. Select “Firmware Update” page to update firmware.

Customer Display Configuration Utility

Connect: COM2
PIN:4FMLD00V0910(005) V 1.0.0.0

Scan Device Help Current Settings Change Settings Exit

Configuration **Firmware Update**

C:\LD00-007.ebin Open File

Device Version: 4FMLD00V0910(005)
BinFile Version: 4FMLD00VG100(007)

Update Set Default

7. If update success utility will show new firmware version on title.

