

iButton Virtual COM port installation

V1.0, April 2013

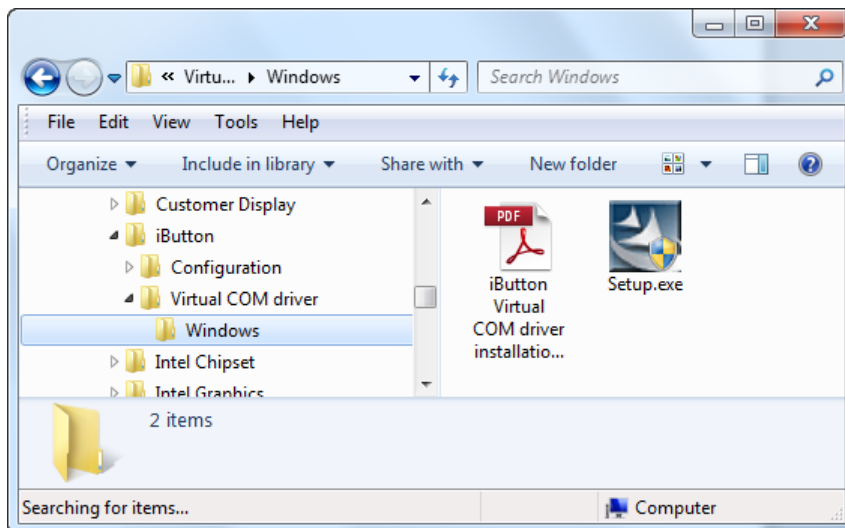
Introduction

The iButton (Dallas key reader) has a USB keyboard interface in its default setting. This means that the system will see the iButton as a USB keyboard. No special program is needed to read the iButton output. Optionally, a virtual COM port driver can be installed, to operate the iButton through a RS232 port.

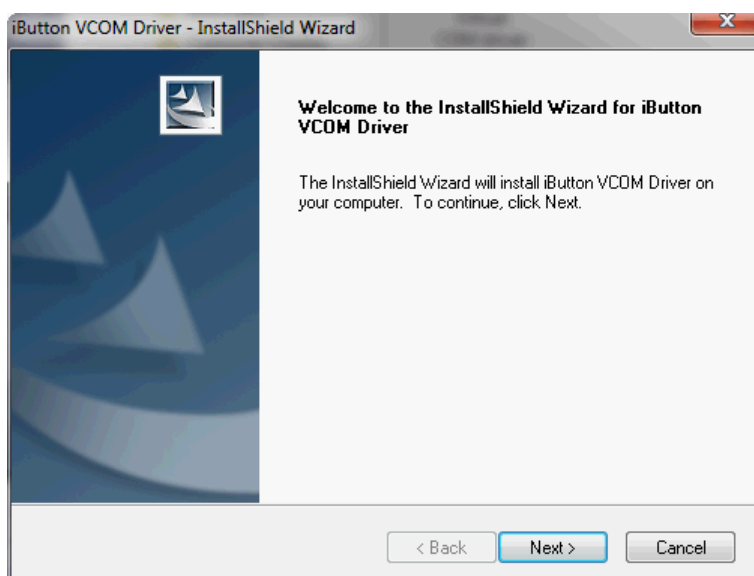
When the Windows driver is installed, the operating system will have an additional COM port; This is usually COM8.

This manual explains how to install the virtual COM port, and how to change the iButton interface from the default USB keyboard to RS232.

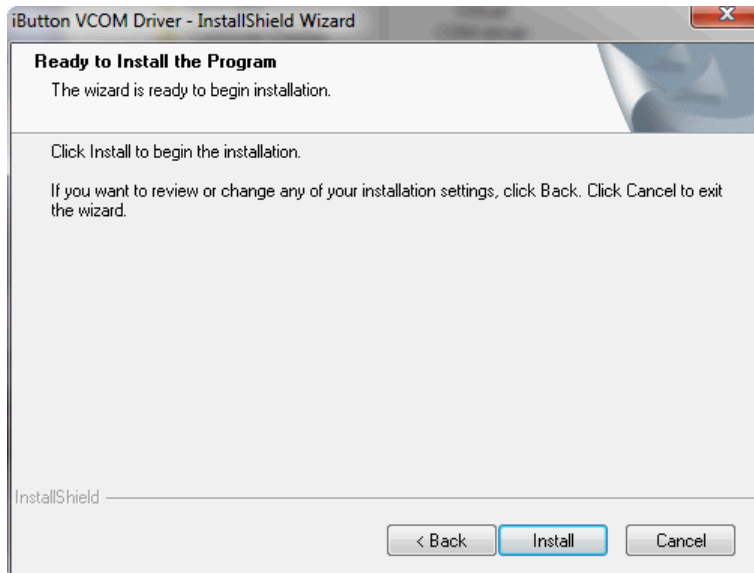
1. Double-click on the Setup icon to start the VCOM driver installation process.



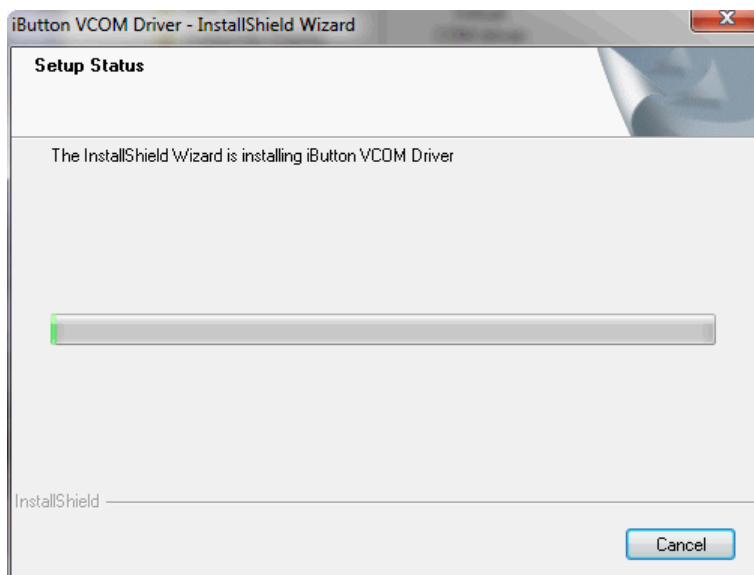
2. Click **Next**



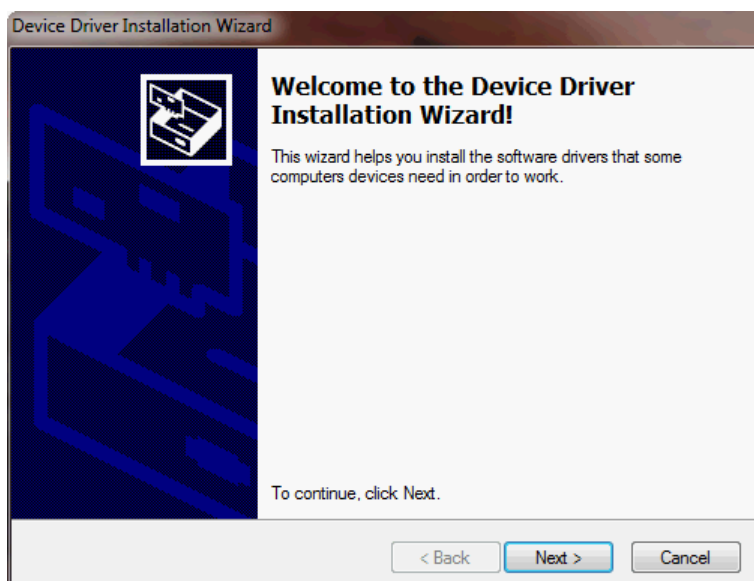
3. Click **Install**



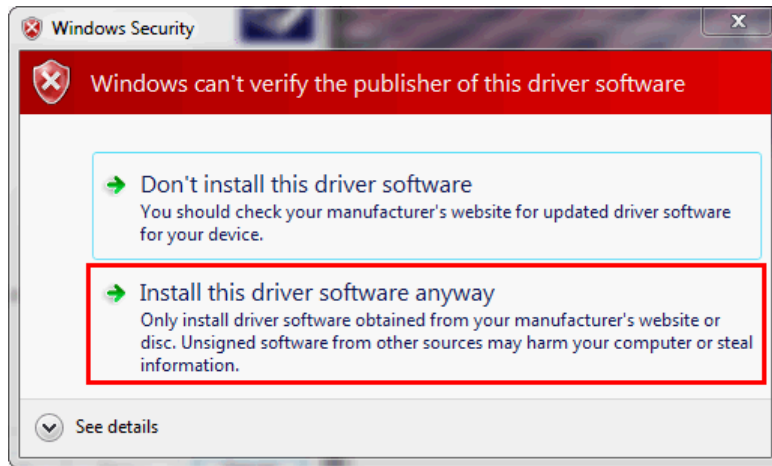
4. The installation has started. Wait...



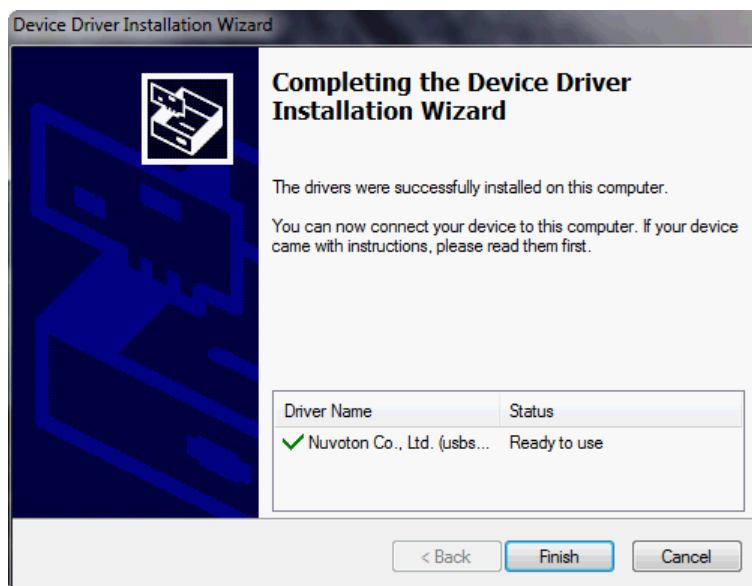
5. Click **Next**



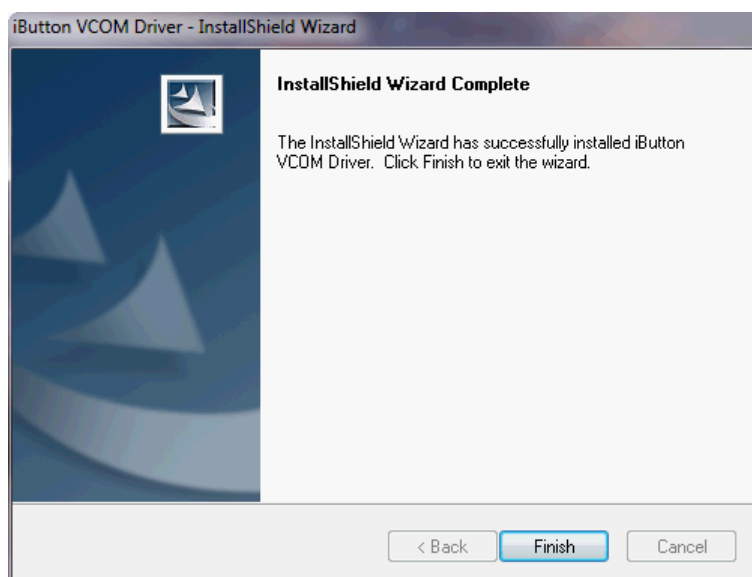
6. Click **Install this driver software anyway**



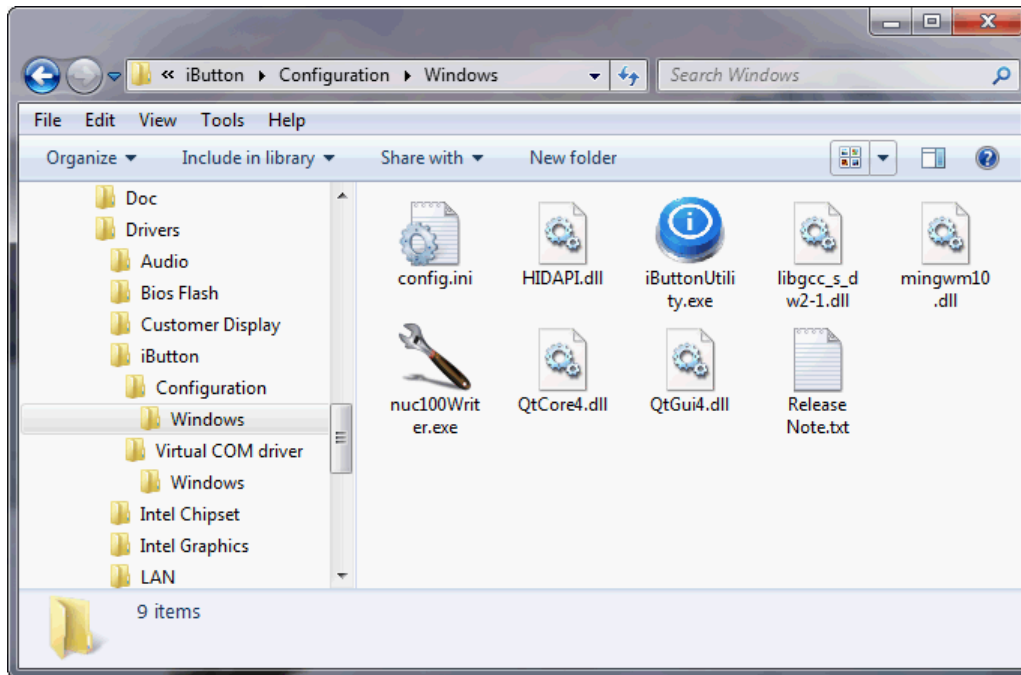
7. Click **Finish**



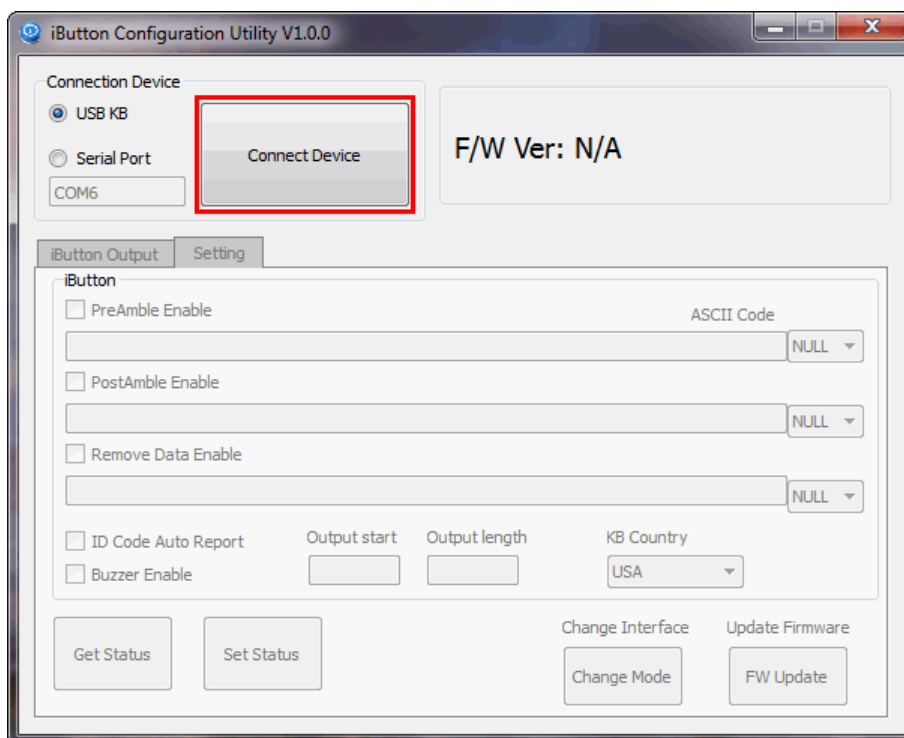
8. Click **Finish**



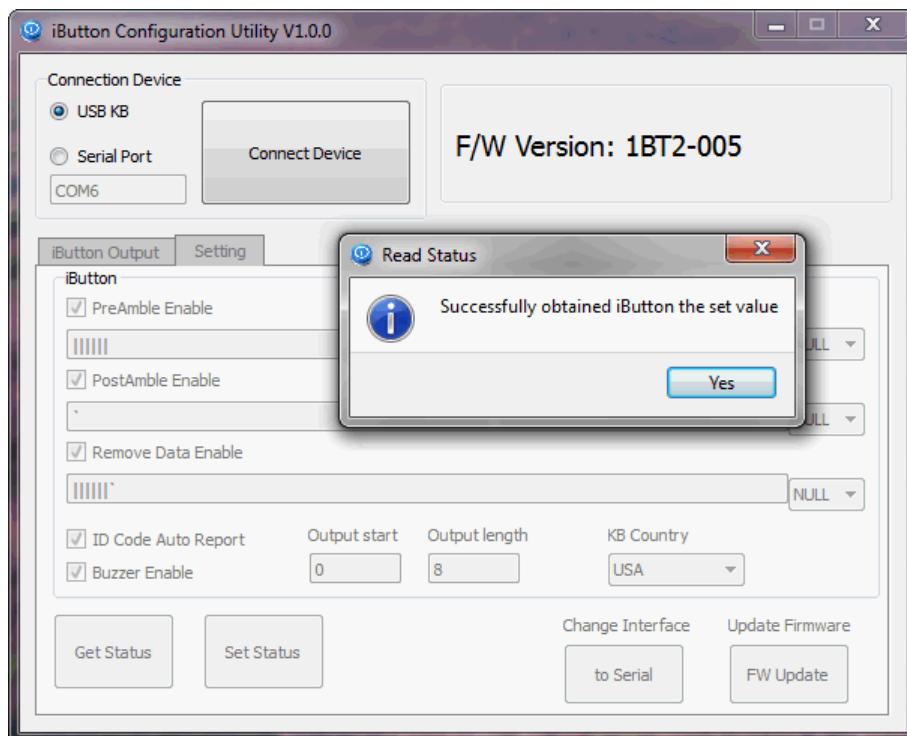
9. Start the iButton utility by double clicking on the **iButtonUtility** icon



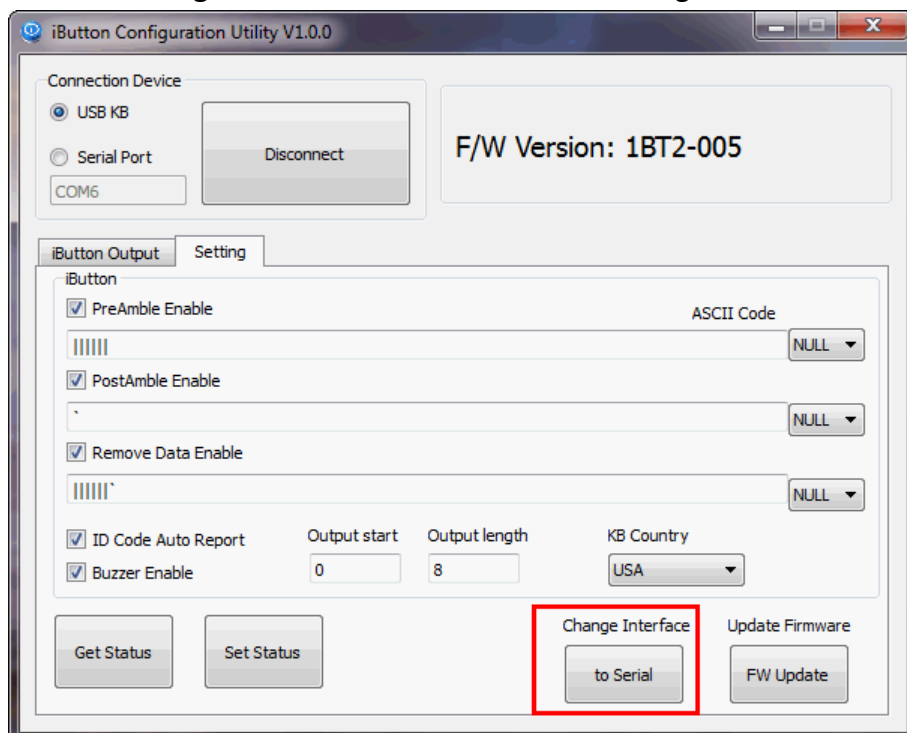
10. The current interface (USB) is detected automatically by the iButton utility. Click on the **Connect Device** button to connect the iButton.



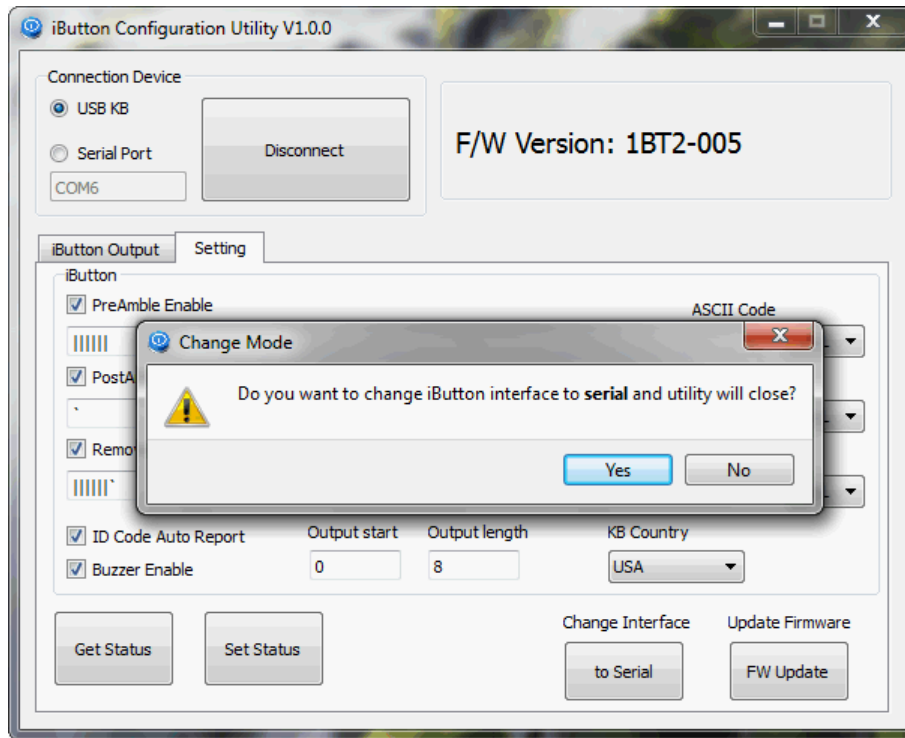
11. The iButton has connected to the USB interface and has read in the iButton settings.
Click **Yes**.



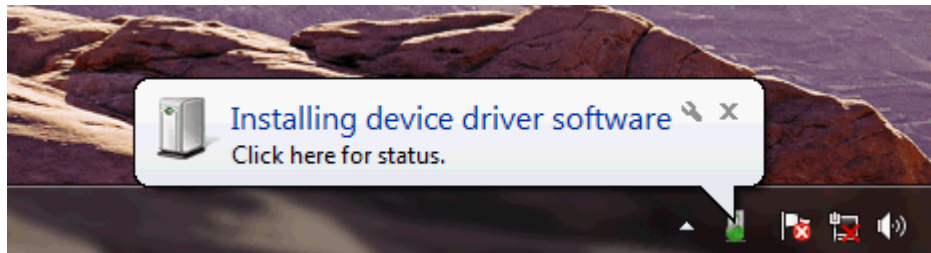
12. Click the **Change Interface to Serial** button to change the interface to RS232



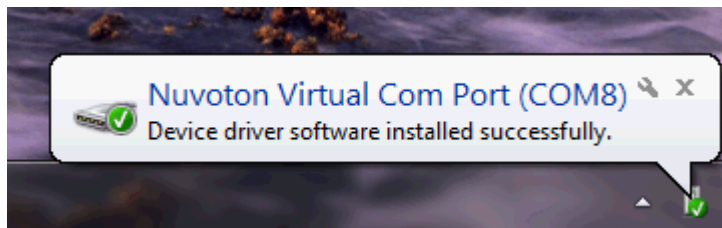
13. Click **Yes**. The iButton utility will close.



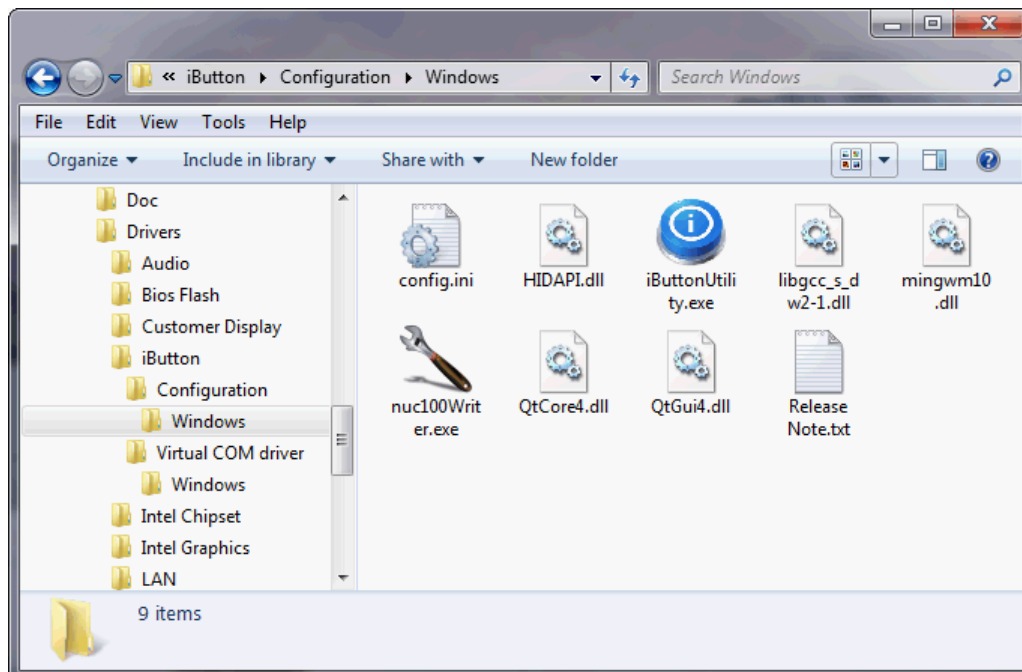
14. The new serial port has been detected, the OS is installing the device driver.



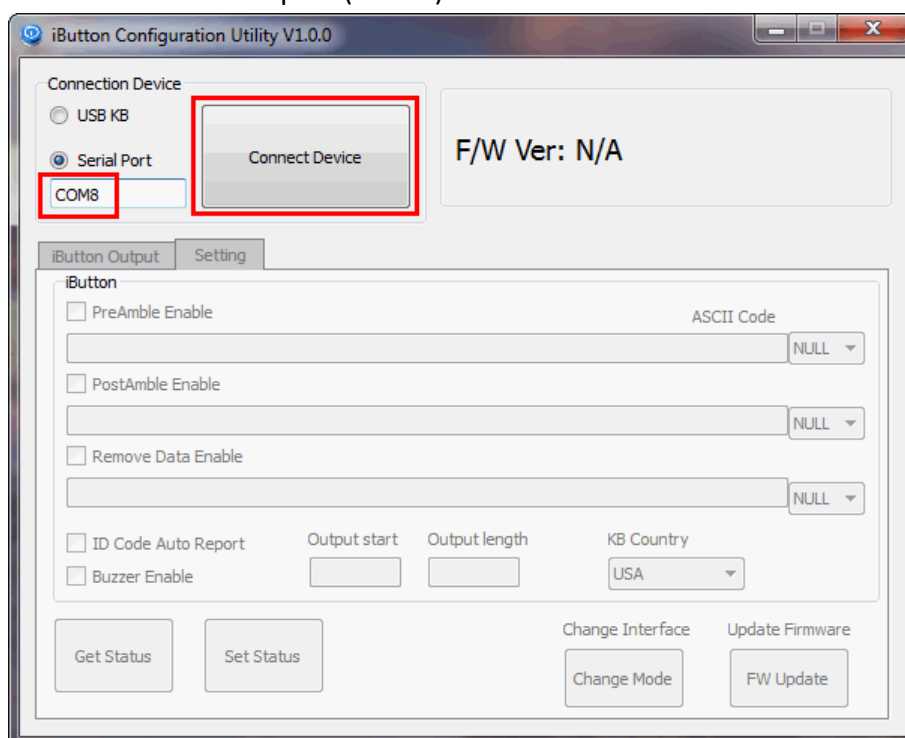
15. The Virtual COM port has been successfully installed on COM8



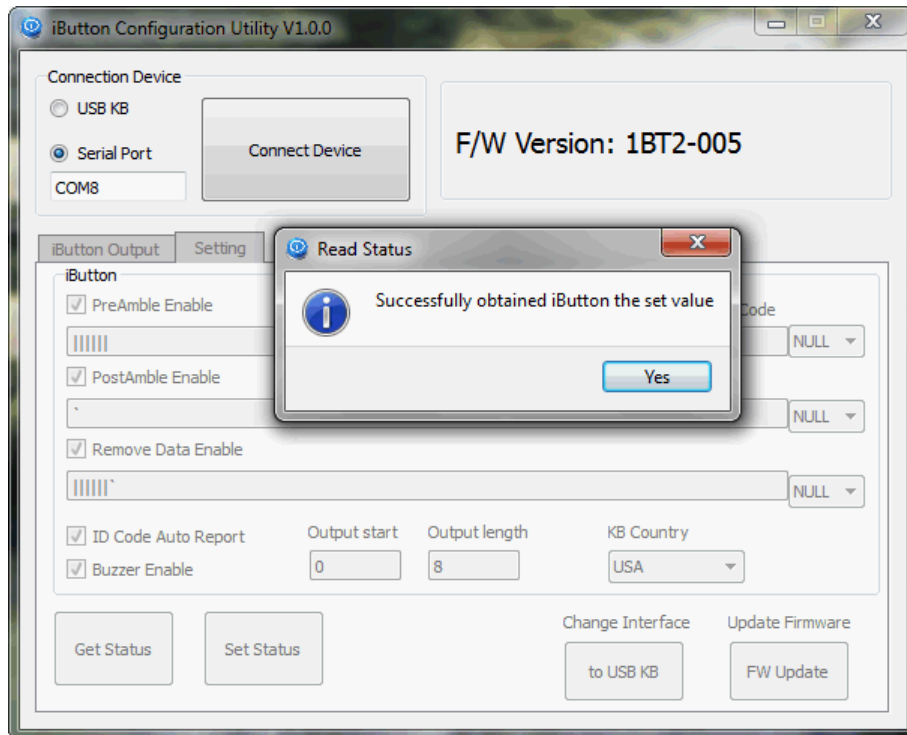
16. Re-start the iButton utility by double clicking on the **iButtonUtility** icon.



17. Set the correct COM port (COM8) and click the **Connect Device** button.



18. The utility has successfully connected the iButton to COM8, and read the iButton settings.



Note: If you do not remember which COM port is used by the iButton, you can check the Device Manager:

